

An active performance management solution.

PUMP MANAGER





Pump Manager is a cloud-based service that connects operators to Design Envelope pumps, providing real-time insights based on operating data.

Powered by IBM Watson analytics platform, Pump Manager brings insights to the palm of your hand.

KEY FEATURES

REAL-TIME INSIGHTS AND ALERTS

Excessive vibration

Broken coupling

Pump in hand

Dead head

Bearing Failure

Impeller imbalance

Shaft Misalignment

Mechanical Seal Failure

Cavitation

PERFORMANCE REPORTS

Know of problems before they occur. Pump Manager will alert you when something is wrong.

The average flow profile over time

The average energy consumption profile

Current operation conditions relative to design conditions

Flow and head relationships

3 dimensional pump vibration

Carbon footprint report

KEY BENEFITS

REDUCE OPERATING COSTS

Continuous optimization for maximum energy efficiency

Lower maintenance costs

INCREASE AVAILABILITY AND RELIABILITY

Reduce unexpected failures

Early problem detection

Faster return to service

IMPROVE TENANT COMFORT AND PRODUCTIVITY

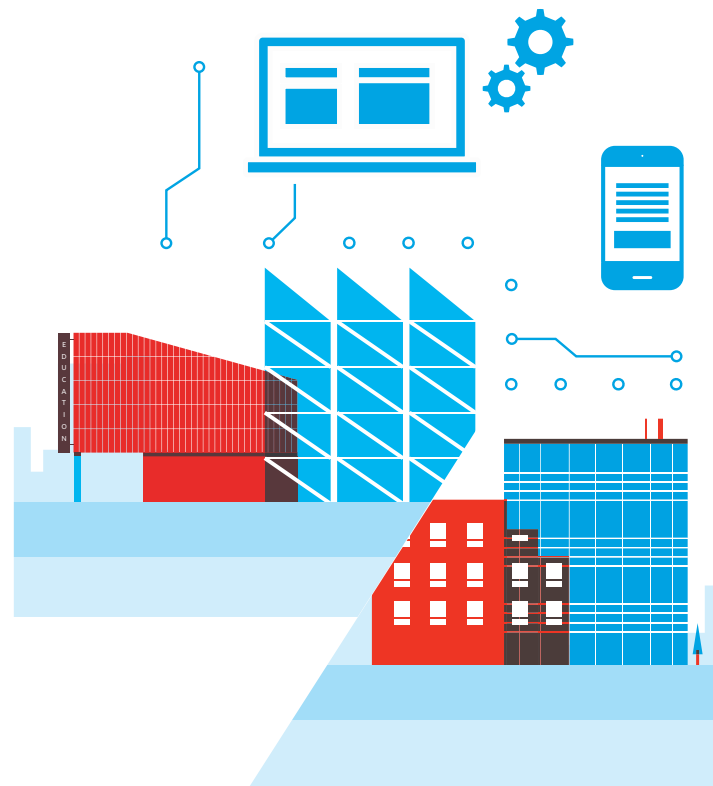
Keep flows in the desired range, reducing temperature swings

IMPROVE BUILDING RESILIENCE

Make informed capital investment decisions

AVAILABLE NOW:

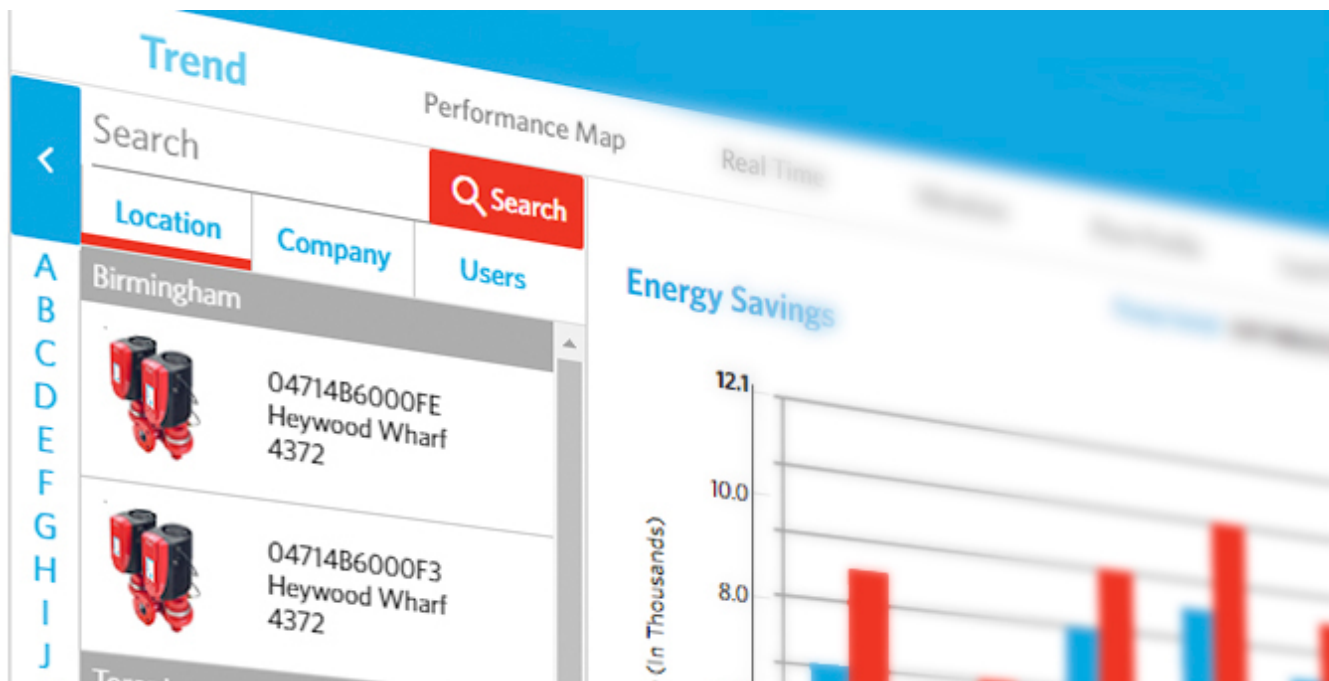
COMING SOON:



PLANS

FREE TRIAL
until 2018.12.31

| | ESSENTIALS | PROFESSIONAL | ENTERPRISE |
|---|------------|--------------|-------------|
| SECURE IOT CONNECTIVITY Plug 'n play setup, no LAN connection required. Pump connected to the IBM Watson analytics platform cloud via a 4G LTE router with built-in cellular modem. Authentication key and 1-way push notifications only with no inbound communication to pumps make for safe connection | ✓ | ✓ | ✓ |
| PERFORMANCE REPORTS | ✓ | ✓ | ✓ |
| REAL-TIME INSIGHTS AND ALERTS | | ✓ | ✓ |
| PREDICTIVE MAINTENANCE Know when to service the pump with the right parts | | ✓ | ✓ |
| INTEGRATION WITH BUILDING SYSTEMS Building Automation Systems (BAS) Energy Management Systems (EMS) Computerized Maintenance Management Systems (CMMS) | | | ✓ |
| EDUCATION Learn from the experts about fluid flow fundamentals, pump operating and efficiency tips | ✓ | ✓ | ✓ |
| SUPPORT We are here for you 24x7 with customer service and technical support | | ✓ | ✓ |
| ACCOUNT REVIEW WITH PUMP ENGINEER | | Annual | Semi-Annual |



DO I QUALIFY?

TORONTO

23 BERTRAND AVENUE
TORONTO, ONTARIO
CANADA
M1L 2P3
+1 416 755 2291

BUFFALO

93 EAST AVENUE
NORTH TONAWANDA, NEW YORK
U.S.A.
14120-6594
+1 716 693 8813

BIRMINGHAM

HEYWOOD WHARF, MUCKLOW HILL
HALESOWEN, WEST MIDLANDS
UNITED KINGDOM
B62 8DJ
+44 (0) 8444 145 145

MANCHESTER

WOLVERTON STREET
MANCHESTER
UNITED KINGDOM
M11 2ET
+44 (0) 8444 145 145

BANGALORE

#59, FIRST FLOOR, 3RD MAIN
MARGOSA ROAD, MALLESWARAM
BANGALORE, INDIA
560 003
+91 (0) 80 4906 3555

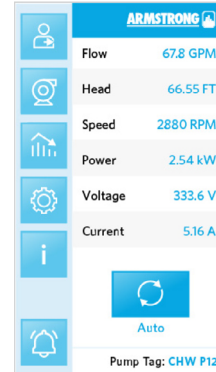
SHANGHAI

UNIT 903, 888 NORTH SICHUAN RD
HONGKOU DISTRICT
SHANGHAI, CHINA
200085
+86 (0)21 5237 0909

SÃO PAULO

RUA JOSÉ SEMIÃO RODRIGUES AGOSTINHO,
1370 GALPÃO 6
EMBU DAS ARTES
SAO PAULO, BRAZIL
+55 11 4785 1330

You qualify if you have an
Armstrong Design Envelope
pump with built-in display
that looks like this.



| ARMSTRONG | |
|-------------------|----------|
| Flow | 67.8 GPM |
| Head | 66.55 FT |
| Speed | 2880 RPM |
| Power | 2.54 kW |
| Voltage | 333.6 V |
| Current | 5.16 A |
| Auto | |
| Pump Tag: CHW P12 | |



START NOW AT:

armstrongfluidtechnology.com/en/registration/pump-manager

OR CONTACT US:

info@armstrongfluidtechnology.com

For more information
contact your local Armstrong
representative or visit our
website at:

ArmstrongFluidTechnology.com