

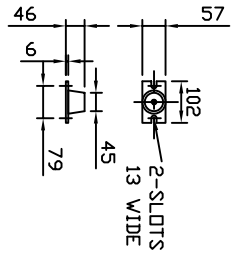
PUMP SIZE	MOTOR KW	FLC AMPS 3x415V	PUMP WEIGHT KGS	SET WEIGHT KGS
1602E22T	2.20	5.03	32.0	348
1603F30T	3.00	6.22	38.0	366
1604F40T	4.00	8.14	55.5	419
1605F55T	5.50	11.0	68.0	456
1606F55T	5.50	11.0	69.0	459
1607F75T	7.50	14.6	74.0	513
1608F75T	7.50	14.6	75.0	516

ALL FLANGES TO BS4504
 MAX WORKING PRESSURE
 TEST PRESSURE

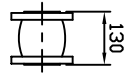
16BAR
 15BAR
 22.5BAR

UNCONTROLLED

ANTI-VIBRATION MOUNTINGS OPTIONAL ONLY SUPPLIER WHEN ORDERED (4-PER SET K2092/1)

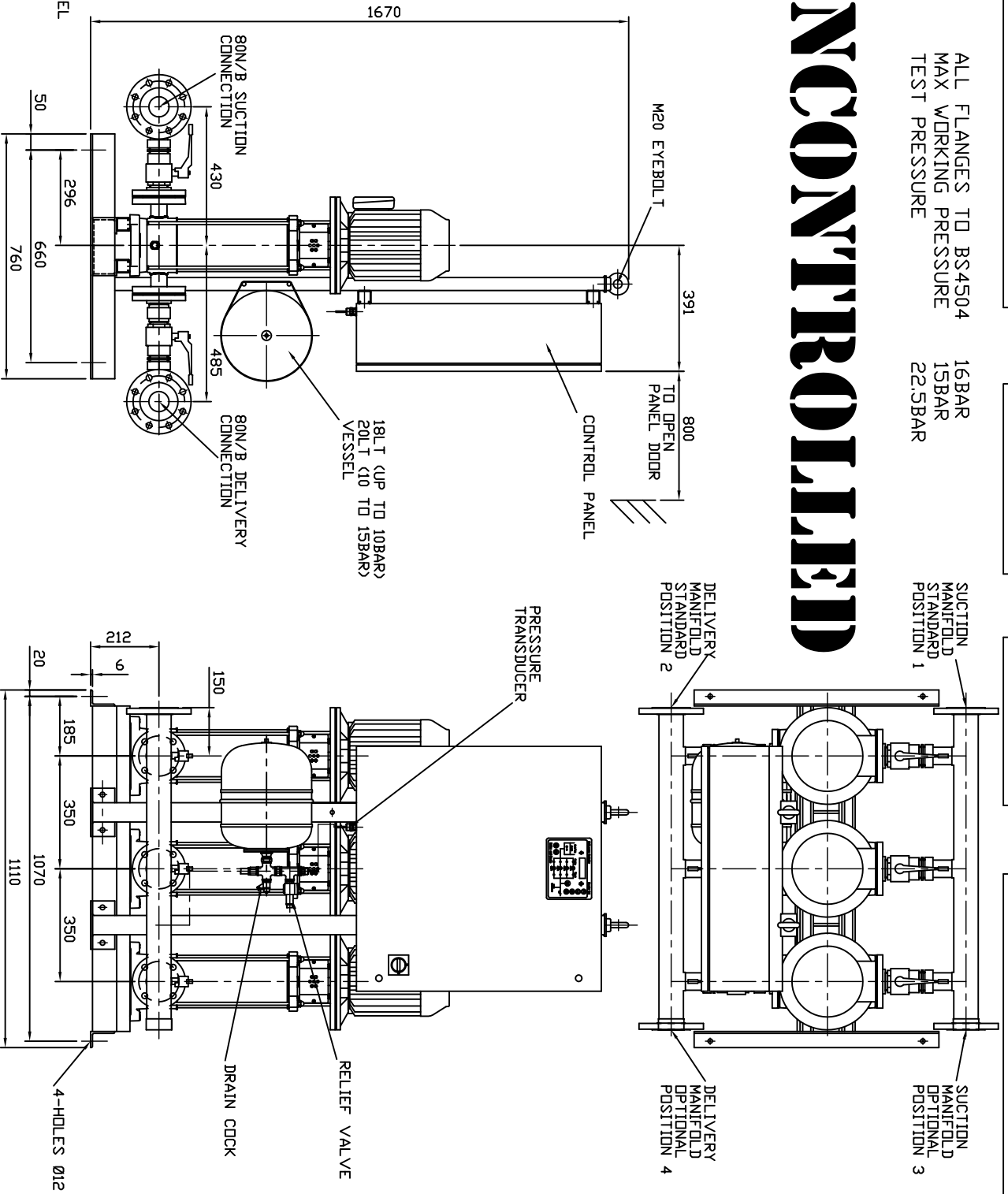


FLEXIBLE CONNECTORS OPTIONAL ONLY SUPPLIED WHEN ORDERED (2-PER SET)



NOTE :-

- 1) MAIN POWER SUPPLY TO PANEL MUST BE SIZED TO COVER ALL PUMP RUNNING AT SAME TIME
- 2) LARGE STORAGE VESSELS IF ORDERED WILL BE SUPPLIED LOOSE FOR POSITIONING BY CLIENT TO SUIT THE AVAILABLE FLOOR SPACE. CLIENT IS TO PROVIDE A CONNECTION FROM THE VESSEL TO THE DELIVERY PIPEWORK ADJACENT TO THE SET ISOLATING AND DRAIN VALVES SHOULD BE FITTED IN THIS CONNECTION



LAST MODIFICATION DETAILS
 DRAWING BORDER CHANGED

ISSUE	DATE	BY	DRN	PJB	APP	PJB
4	15/02/2006	CHK	DRN	PJB	APP	PJB

JOB No.	PART No.	WEIGHT KG	FILE NAME
-	-	-	PX10286-4

DESIGN No.	PATTERN No.	MATERIAL	MAT'L SPEC.
-	-	-	-

TITLE
 GENERAL ARRANGEMENT
 HYDRPAK HML3 SET
 16-PUMP MODELS

DRG No.	DATE	BY	DRN	BSD
PX10286-4	10/10/2002	CHK	DRN	BSD

ARMSTRONG HOLDEN BROOKE PULLEN

VENLOCK WAY, MANCHESTER, M12 5JL
 TEL: +44 (0) 161 223 2223