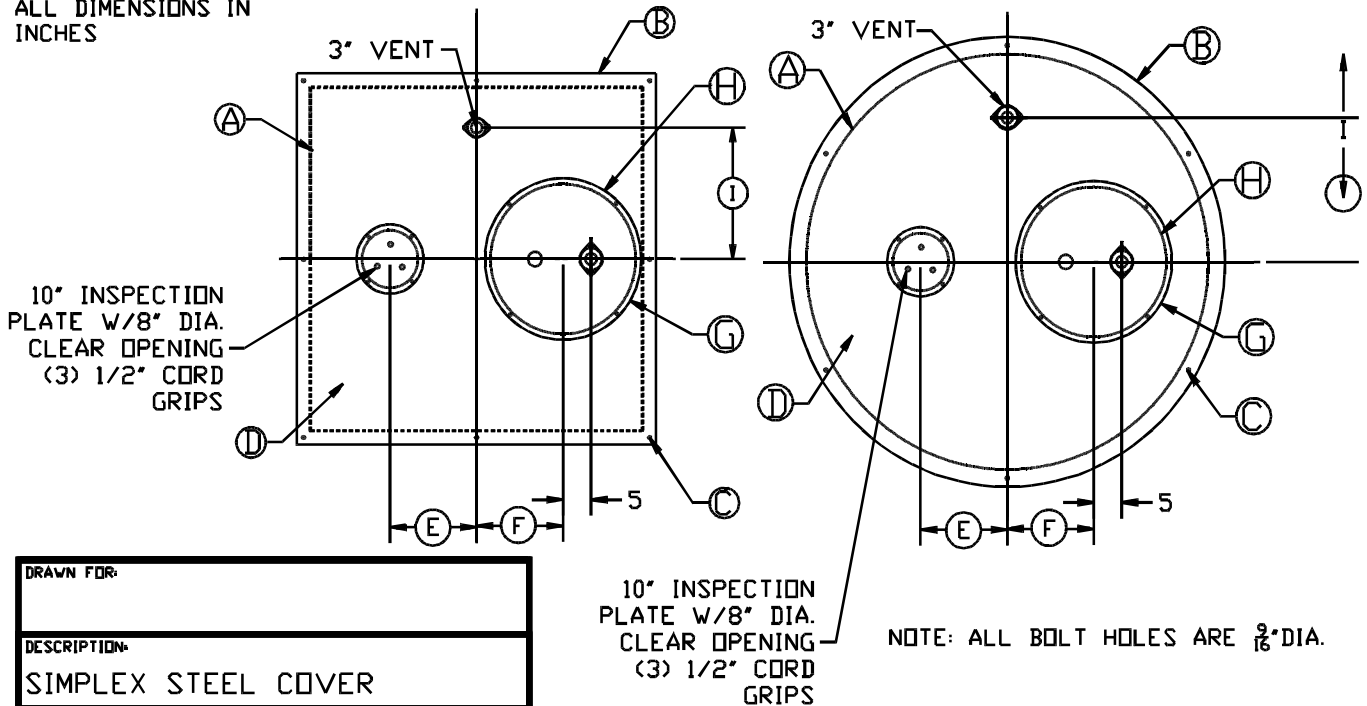


## Submersible Pumps - Simplex Steel Covers

PART#	Ⓐ BASIN I.D.	Ⓑ COVER O.D.	Ⓒ BOLT CIRCLE	Ⓓ COVER THICKNESS	Ⓔ DISTANCE	Ⓕ DISTANCE	Ⓖ ACCESS. PLATE DIM.	Ⓗ CLEAR ACCESS. DIM.	Ⓘ DISTANCE
LB-S2401 LB-S2401-01	24 24X24	28 28X28	26 1/2	1/4	N/A	3	18	16	9 1/2
LB-S3001 LB-S3001-01	30 30X30	34 34X34	32 1/2	1/4	9 7/16	7	18	16	11
LB-S3601 LB-S3601-01	36 36X36	40 40X40	38 1/2	1/4	13	9 1/16	18	16	11
LB-S4201 LB-S4201-01	42 42X42	46 46X46	44 1/2	1/4	14	10 1/16	22	20	14
LB-S4801 LB-S4801-01	48 48X48	54 54X54	51	1/4	18	9	22	20	20
LB-S5401 LB-S5401-01	54 54X54	60 60X60	57	1/4	18	9	22	20	20
LB-S6001 LB-S6001-01	60 60X60	66 66X66	63	3/8	15 1/2	15 1/2	22	20	25
LB-S6601 LB-S6601-01	66 66X66	72 72X72	69	3/8	15 1/2	15 1/2	22	20	25
LB-S7201 LB-S7201-01	72 72X72	78 78X78	75	3/8	15 1/2	15 1/2	28	26	25

ALL DIMENSIONS IN INCHES



DRAWN FOR:	
DESCRIPTION: SIMPLEX STEEL COVER	
DRAWING NUMBER: 0002	
DATE: 9/8/00	SCALE: NONE

S.A. Armstrong Limited  
 23 Bertrand Avenue  
 Toronto, Ontario  
 Canada, M1L 2P3  
 Tel: (416) 755-2291  
 Fax: (416) 759-9101  
 Visit us at [www.armstrongpumps.com](http://www.armstrongpumps.com)

Armstrong Pumps Limited  
 Peartree Road, Stanway  
 Colchester, Essex  
 United Kingdom, C03 5JX  
 Tel: 01206-579491  
 Fax: 01206-760532



© S. A. Armstrong Limited 2001

Armstrong Pumps Inc.  
 93 East Avenue  
 Buffalo, New York  
 U.S.A. 14120-6594  
 Tel: (716) 693-8813  
 Fax: (716) 693-8970

Armstrong Darling Inc.  
 2200 Place Transcanadienne  
 Montreal, Quebec  
 Canada, H9P 2X5  
 Tel: (514) 421-2424  
 Fax: (514) 421-2436

