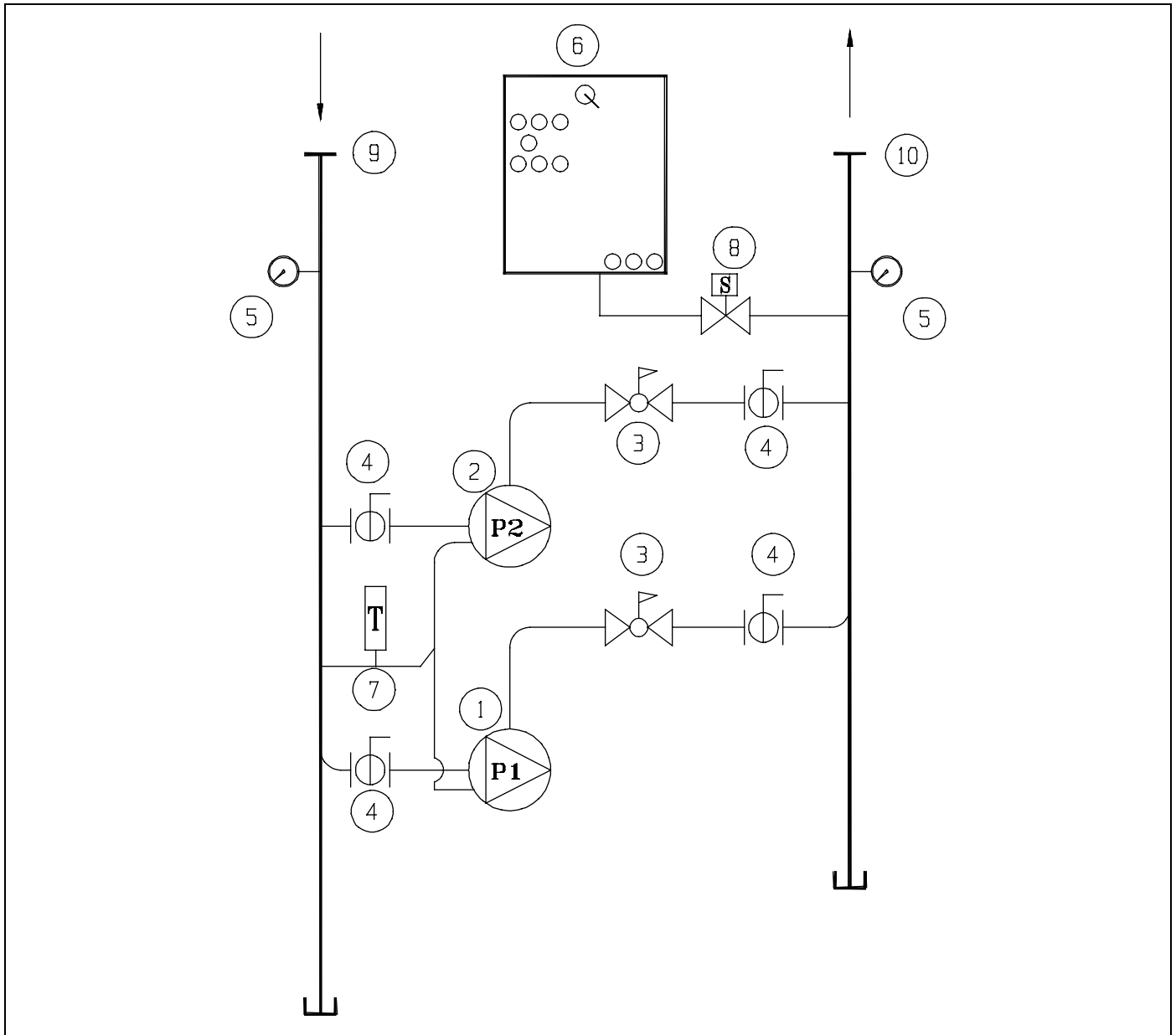


Duplex Booster Piping Schematic



CONTINUOUSLY RUNNING PUMP SYSTEM

1. LEAD PUMP AND MOTOR	6. CONTROL PANEL	
2. LAG PUMP AND MOTOR	7. AQUASTAT	
3. PILOT OPERATED PRV & CHECK VALVE	8. SOLENOID PURGE VALVE	
4. ISOLATION VALVES	9. SUCTION MANIFOLD	
5. PRESSURE GAUGES	10. DISCHARGE MANIFOLD	

S. A. Armstrong Limited
 23 Bertrand Avenue
 Toronto, Ontario
 Canada, M1L 2P3
 T: (416) 755-2291
 F (Main): (416) 759-9101

Armstrong Pumps Inc.
 93 East Avenue
 North Tonawanda, New York
 U.S.A. 14120-6594
 T: (716) 693-8813
 F: (716) 693-8970

Armstrong Holden Brooke Pullen
 Wenlock Way
 Manchester
 United Kingdom, M12 5JL
 T: +44 (0) 1612 232223
 F: +44 (0) 1612 209660

