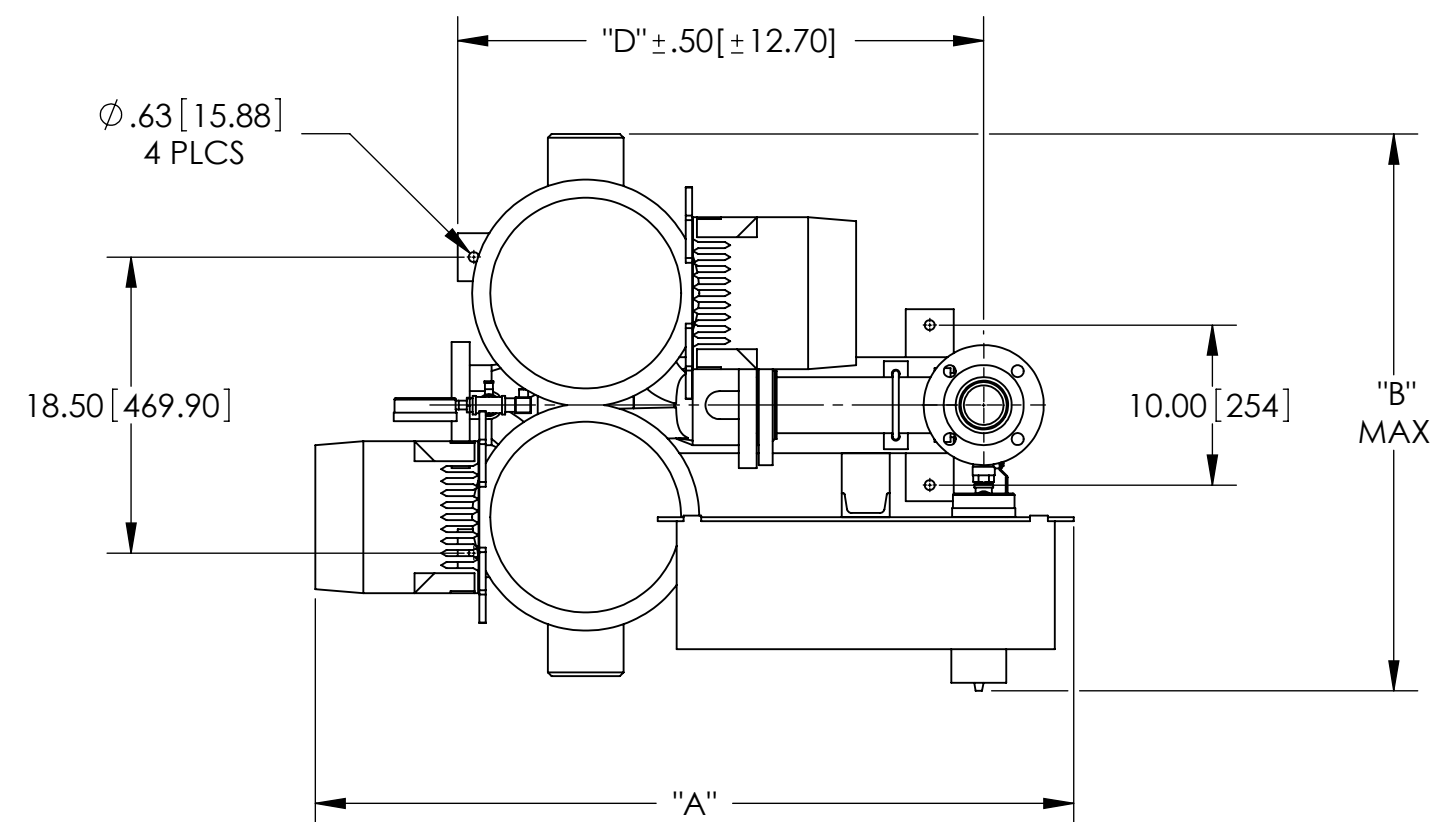


REVISIONS				
ZONE	REV.	DESCRIPTION	DATE	APPROVED
	A	REDRAWN WITH CHANGES. SEE E.O. 103786#	10/18/10	



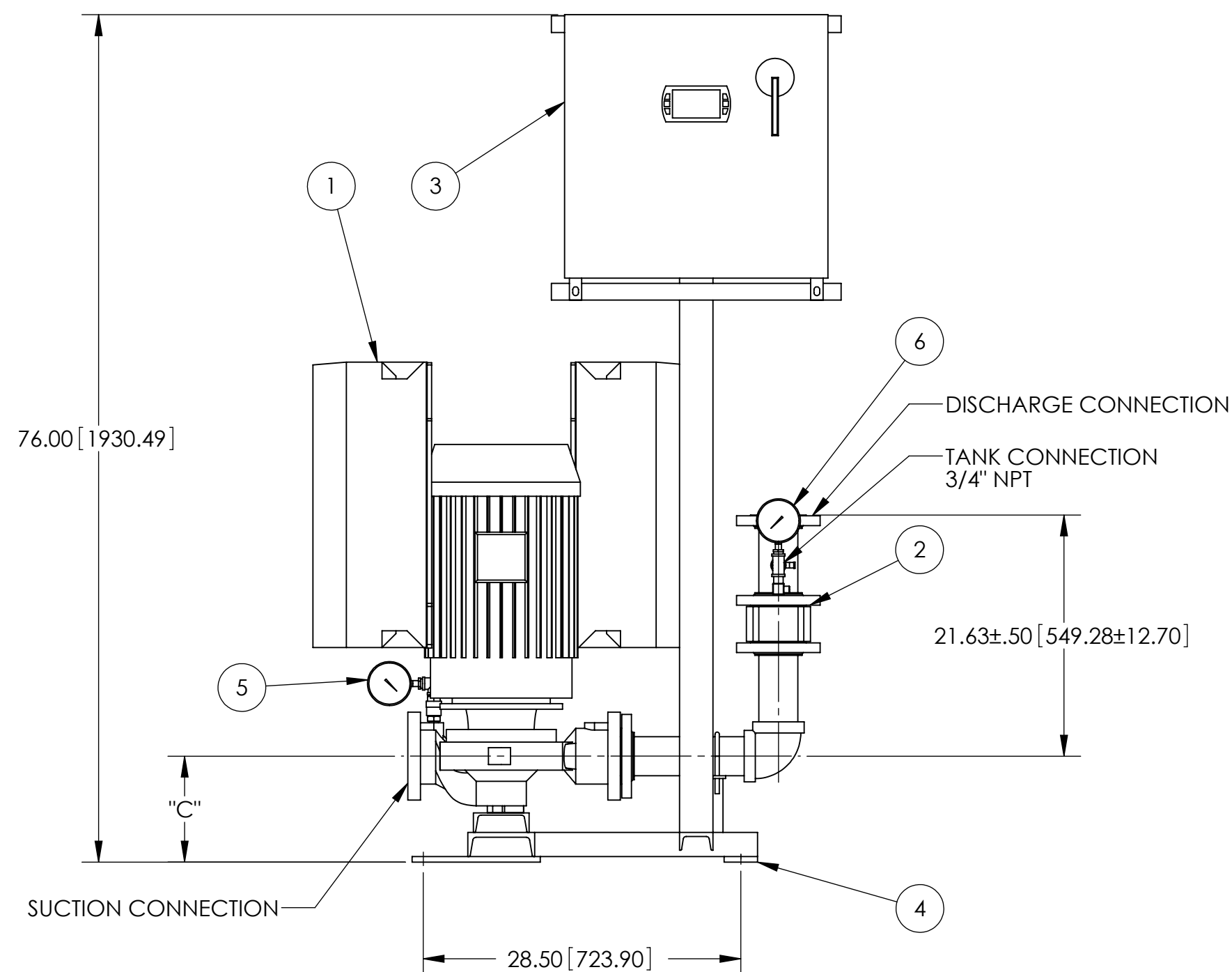
NOTES:

- 1 - Dimensions are based on factory choice standard components. For other than standard consult factory, as a new drawing may be required.
- 2 - All dimensions are in inches [mm].
- 3 - Tolerances are +/- 1/4" [6.35] unless otherwise specified.
- 4 - Drawings are for layout purposes only.

Maximum System Pressure: 175 PSI 250 PSI

INLET ORIENTATION

- LEFT HAND - STD. AS SHOWN
(CONSULT DRAWING #2546-100 FOR RIGHT HAND ORIENTATION.)



DIMENSIONS				
DUALPAK	A	B	C	D
6901-3x3x6	46.41 [1178.72]	31.99 [812.42]	9.25 [234.95]	32.38 [822.45]
6902-3x3x8	47.41 [1204.12]	34.80 [883.86]	9.50 [241.30]	32.88 [835.03]
6903-3x3x6	46.41 [1178.72]	31.99 [812.42]	9.25 [234.95]	32.38 [822.45]
6904-3x3x8	47.41 [1204.12]	34.80 [883.86]	9.50 [241.30]	32.88 [835.03]

1	DUALARM PUMP, MOTOR, AND DRIVE	4	BASE & PANEL SUPPORT
2	CHECK VALVE	5	SUCTION PRESSURE GAUGE
3	DUAL PUMP CONTROLLER	6	DISCHARGE PRESSURE GAUGE

DO NOT SCALE

PROPRIETARY AND CONFIDENTIAL
THE INFORMATION CONTAINED IN THIS DRAWING IS THE SOLE PROPERTY OF S.A. ARMSTRONG. ANY REPRODUCTION IN PART OR AS A WHOLE WITHOUT THE WRITTEN PERMISSION OF S.A. ARMSTRONG IS PROHIBITED.



UNLESS OTHERWISE SPECIFIED:		NAME	DATE
DIMENSIONS ARE IN INCHES WEIGHT IN POUNDS	DRAWN	JMC	5/13/10
TOLERANCES: FRACTIONAL ± 1/4 ANGULAR: MACH ± 0.5° BEND ± 0.5° TWO PLACE DECIMAL ± 0.25 THREE PLACE DECIMAL ± 0.003	CHECKED	PR	10/18/10
DIMENSIONING AND TOLERANCING PER: ASME Y14.5-1994	Q.A.	JM	10/18/10
MATERIAL	MFG APPR.	KB	10/18/10
FINISH	ENG APPR.	JC	10/18/10
APPLICATION	COMMENTS:		
DESIGN AUTHORITY: S.A. ARMSTRONG	DO NOT SCALE		



TITLE:
**6901/2/3/4IVS DUALPAK
LEFT HAND DWB**

SIZE	DWG. NO.	REV
C	2546-000	A
SCALE: 1:12	WEIGHT:	SHEET 1 OF 1