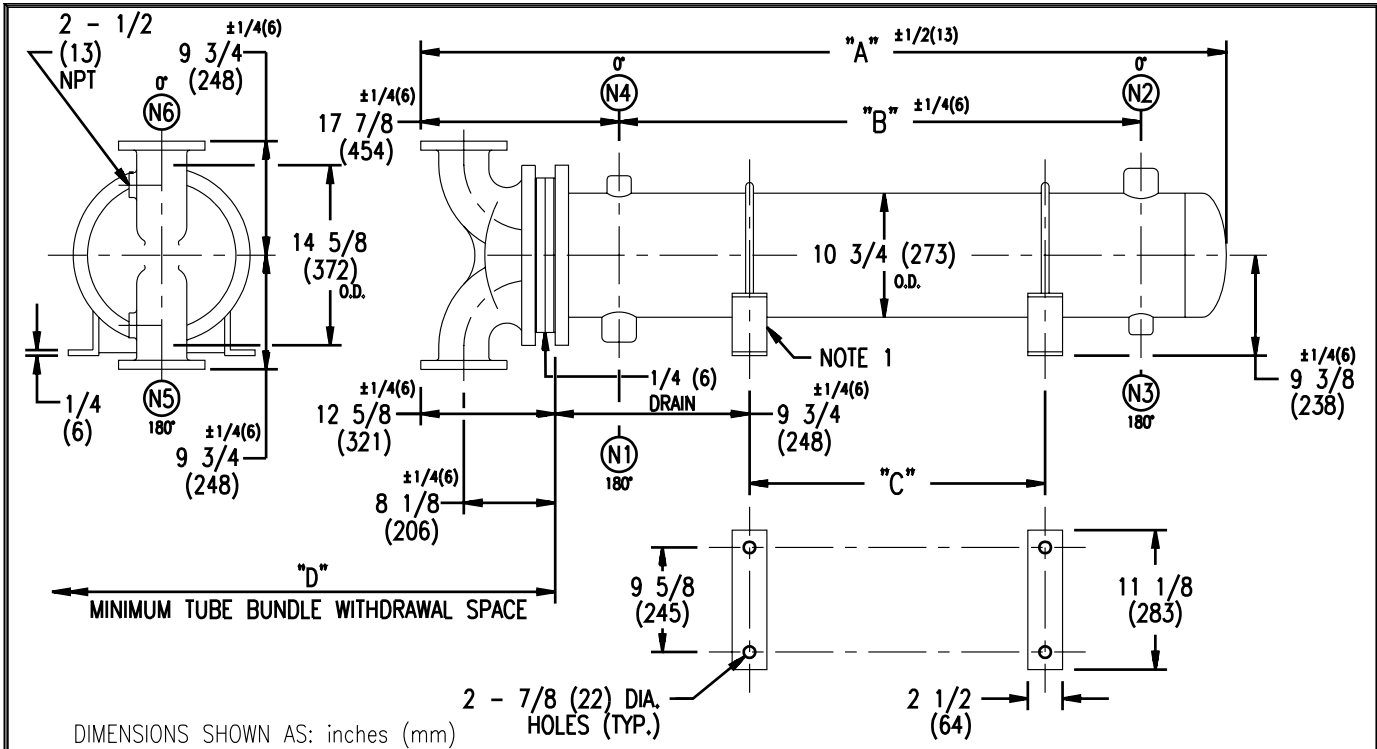


ARMSTRONG®



DIMENSIONS SHOWN AS: inches (mm)

EXCHANGER SIZE *BAFFLE SPACING	DIMENSIONS											
	A		B		C		D		N1		N2	
	inches	mm	inches	mm	inches	mm	inches	mm	inches	mm	inches	mm
WX-103-2*-2	50 7/8	1292	26 1/2	673	18	457	40	1016	3	76	3	76
WX-104-2*-2	62 7/8	1597	38 1/2	978	30	762	52	1321	3	76	3	76
WX-105-2*-2	74 7/8	1902	50 1/2	1283	42	1067	64	1626	3	76	3	76
WX-106-2*-2	86 7/8	2207	62 1/2	1588	54	1372	76	1930	3	76	3	76
WX-107-2*-2	98 7/8	2511	74 1/2	1892	66	1676	88	2235	3	76	3	76
WX-108-2*-2	110 7/8	2816	86 1/2	2197	78	1981	100	2540	3	76	3	76
WX-109-2*-2	122 7/8	3121	98 1/2	2502	90	2286	112	2845	3	76	3	76
WX-1010-2*-2	134 7/8	3426	110 1/2	2807	102	2591	124	3150	3	76	3	76
WX-1011-2*-2	146 7/8	3731	122 1/2	3112	114	2896	136	3454	3	76	3	76
WX-1012-2*-2	158 7/8	4035	134 1/2	3416	126	3200	148	3759	3	76	3	76
WX-1013-2*-2	170 7/8	4340	146 1/2	3721	138	3505	160	4064	3	76	3	76
WX-1014-2*-2	182 7/8	4645	158 1/2	4026	150	3810	172	4369	3	76	3	76
WX-1015-2*-2	194 7/8	4950	170 1/2	4331	162	4115	184	4674	3	76	3	76

NOZZLE SCHEDULE				
SERVICE	MARK	SHELL SIDE	MARK	TUBE SIDE
INLET	N1	AS PER TABLE	N5	4 (102) FLG
OUTLET	N2	AS PER TABLE	N6	4 (102) FLG
DRAIN	N3	1/2 (13) NPT		
VENT	N4	3/4 (19) NPT		

NOTES: 1. SUPPORTS SUPPLIED ONLY IF SPECIFIED ON ORDER.
 2. NOZZLE SIZES SHOWN ARE RECOMMENDED FOR MAXIMUM EXCHANGER LIFE.
 3. FABRICATED TO ASME CODE SECTION VIII DIVISION 1 AND LATEST ADDENDA.
 4. DRAWING IS NOT TO SCALE.
 5. ALL DIM'S ±1/8 (3) UNLESS OTHERWISE SHOWN.

DESIGN CONDITIONS				
	SHELL		TUBES	
DESIGN PRESSURE	150 PSIG	1034 KPa	150 PSIG	1034 KPa
DESIGN TEMPERATURE	375 °F	191 °C	375 °F	191 °C
MIN. DESIGN METAL TEMP.	35 °F	1.7 °C	35 °F	1.7 °C
HYDRO. TEST PRESSURE	225 PSIG	1551 KPa	300 PSIG	2068 KPa
CONTENTS	WATER		WATER	

CUSTOMER:
 LOCATION:
 ENGINEER:
 ORDER No.:
 PROJECT/JOB:
 LOCATION:
 TAG: (QUOTE #)

TITLE	G.A. 150 LB. WX SERIES HEAT EXCHANGERS				A R M S T R O N G				NUMBER	REV.
DATE:	12 / 01 / 94	BY:	D.C.R.	TORONTO - CANADA	MONTREAL - CANADA	BUFFALO - N. Y.	COLCHESTER - U.K.	WX-10-2P-2(3)		
				TEL : (416) 755-2291	TEL : (514) 421-2424	TEL: (716) 693-8813	TEL: (44) 120-657-9491			