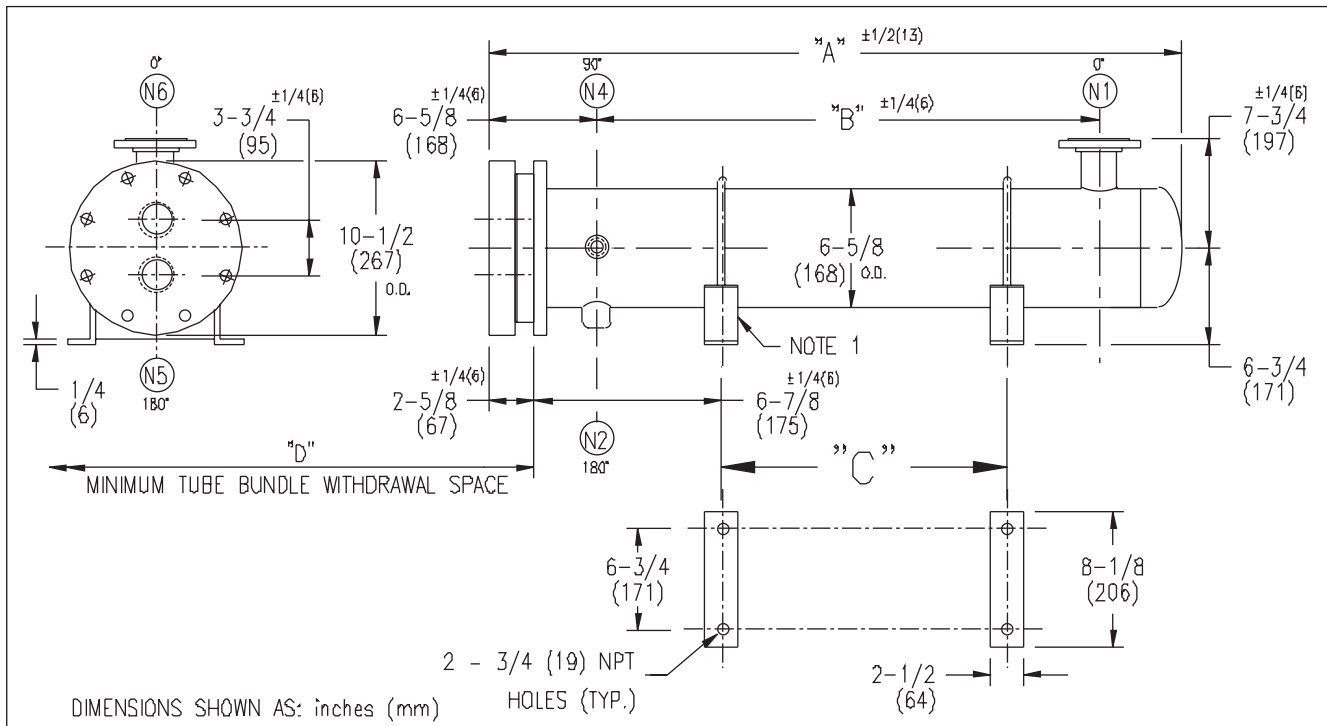


ARMSTRONG®



EXCHANGER SIZE *BAFFLE SPACING	DIMENSIONS											
	A		B		C		D		N1		N2	
	inches	mm	inches	mm	inches	mm	inches	mm	inches	mm	inches	mm
WS3T-69-2*-E3	120 1/8	3051	107	2718	96 3/8	2448	110	2794	4	102	1 1/4	32
WS3T-610-2*-E3	132 1/8	3356	119	3023	108 3/8	2753	122	3099	4	102	1 1/4	32
WS3T-611-2*-E3	144 1/8	3661	131	3327	120 3/8	3058	134	3404	4	102	1 1/4	32
WS3T-612-2*-E3	156 1/8	3966	143	3632	132 3/8	3362	146	3708	4	102	1 1/4	32

NOZZLE SCHEDULE				
SERVICE	MARK	SHELL SIDE	MARK	TUBE SIDE
INLET	N1	AS PER TABLE	N5	2 (51) NPT
OUTLET	N2	AS PER TABLE	N6	2 (51) NPT
VENT	N4	3/4 (19) NPT		

NOTES: 1. SUPPORTS SUPPLIED ONLY IF SPECIFIED ON ORDER.
 2. NOZZLE SIZES SHOWN ARE RECOMMENDED FOR MAX. EXCHANGER LIFE, NO EXTERNAL FORCES APPLY.
 3. FABRICATED TO ASME CODE SECTION VIII DIVISION 1 AND LATEST ADDENDA.
 4. DRAWING IS NOT TO SCALE.
 5. ALL DIMN'S $\pm 1/8$ (3) UNLESS OTHERWISE SHOWN.

DESIGN CONDITIONS				
	SHELL		TUBES	
DESIGN PRESSURE	150 PSIG	1034 KPa	300 PSIG	2068 KPa
DESIGN TEMPERATURE	375 °F	191 °C	375 °F	191 °C
MIN. DESIGN METAL TEMP.	35 °F	1.7 °C	35 °F	1.7 °C
HYDRO. TEST PRESSURE	225 PSIG	1551 KPa	450 PSIG	3102 KPa
CONTENTS	STEAM		WATER	

CUSTOMER: _____
 LOCATION: _____
 ENGINEER: _____
 ORDER No.: _____
 PROJECT/JOB: _____
 LOCATION: _____
 TAG: _____ (QUOTE # _____)

TITLE G.A. 300 LB. WS SERIES HEAT EXCHANGERS	A R M S T R O N G				NUMBER WS3T-6-2P-E3(4)	REV.
DATE: 12 / 04 / 00 BY: J.R.	TORONTO - CANADA TEL : (416) 755-2291	MONTREAL - CANADA TEL : (514) 421-2424	BUFFALO - N. Y. TEL: (716) 693-8813	COLCHESTER - U.K. TEL: (44) 120-657-9491		