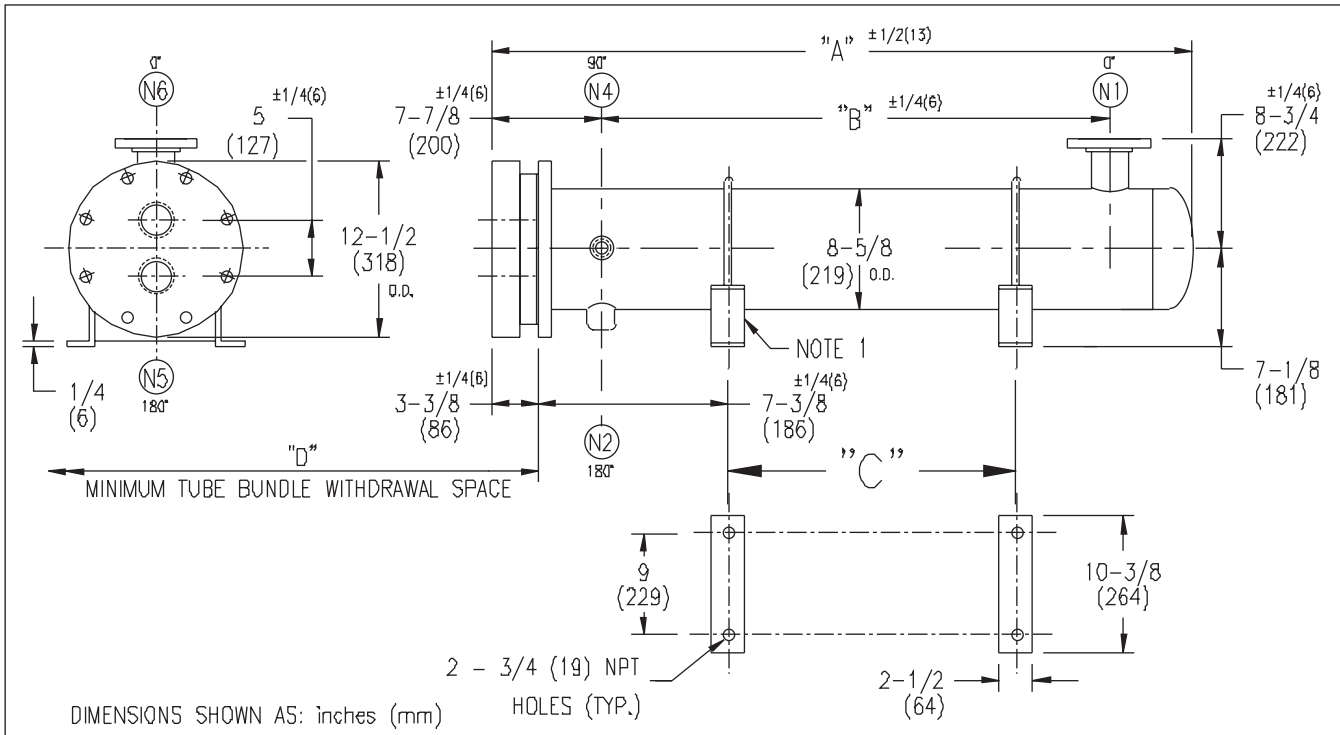


ARMSTRONG®



DIMENSIONS SHOWN AS: inches (mm)

HOLES (TYP.)

EXCHANGER SIZE *-BAFFLE SPACING	DIMENSIONS											
	A		B		C		D		N1		N2	
	inches	mm	inches	mm	inches	mm	inches	mm	inches	mm	inches	mm
WS3T-85-2*-E3	75 7/8	1927	60 1/4	1530	48 5/8	1235	62	1575	4	102	1	25
WS3T-86-2*-E3	87 7/8	2232	72 1/4	1835	60 5/8	1540	74	1880	4	102	1 1/4	32
WS3T-87-2*-E3	99 7/8	2537	84 1/4	2140	72 5/8	1845	86	2184	4	102	1 1/4	32
WS3T-88-2*-E3	111 7/8	2842	96 1/4	2445	84 5/8	2149	98	2489	6	152	1 1/4	32
WS3T-89-2*-E3	123 7/8	3146	108 1/4	2750	96 5/8	2454	110	2794	6	152	1 1/4	32
WS3T-810-2*-E3	135 7/8	3451	120 1/4	3054	108 5/8	2759	122	3099	6	152	1 1/4	32
WS3T-811-2*-E3	147 7/8	3756	132 1/4	3359	120 5/8	3064	134	3404	6	152	1 1/4	32
WS3T-812-2*-E3	159 7/8	4061	144 1/4	3664	132 5/8	3369	146	3708	6	152	1 1/4	32
WS3T-813-2*-E3	171 7/8	4366	156 1/4	3969	144 5/8	3673	158	4013	6	152	1 1/4	32
WS3T-814-2*-E3	183 7/8	4670	168 1/4	4274	156 5/8	3978	170	4318	6	152	1 1/4	32

NOZZLE SCHEDULE

SERVICE	MARK	SHELL SIDE	MARK	TUBE SIDE
INLET	(N1)	AS PER TABLE	(N5)	3 (76) NPT
OUTLET	(N2)	AS PER TABLE	(N6)	3 (76) NPT
VENT	(N4)	3/4 (19) NPT		

- NOTES: 1. SUPPORTS SUPPLIED ONLY IF SPECIFIED ON ORDER.
 2. NOZZLE SIZES SHOWN ARE RECOMMENDED FOR MAX. EXCHANGER LIFE, NO EXTERNAL FORCES APPLY.
 3. FABRICATED TO ASME CODE SECTION VIII DIVISION 1 AND LATEST ADDENDA.
 4. DRAWING IS NOT TO SCALE.
 5. ALL DIM'S ±1/8 (3) UNLESS OTHERWISE SHOWN.

DESIGN CONDITIONS

	SHELL		TUBES	
DESIGN PRESSURE	150 PSIG	1034 KPa	300 PSIG	2068 KPa
DESIGN TEMPERATURE	375 °F	191 °C	375 °F	191 °C
MIN. DESIGN METAL TEMP.	35 °F	1.7 °C	35 °F	1.7 °C
HYDRO. TEST PRESSURE	225 PSIG	1551 KPa	450 PSIG	3102 KPa
CONTENTS	STEAM		WATER	

CUSTOMER:

LOCATION:

ENGINEER:

ORDER No.:

PROJECT/JOB:

LOCATION:

TAG:

(QUOTE #)

TITLE G.A. 300 LB. WS SERIES HEAT EXCHANGERS

A R M S T R O N G

TORONTO - CANADA MONTREAL - CANADA BUFFALO - N. Y. COLCHESTER - U.K.
 TEL : (416) 755-2291 TEL : (514) 421-2424 TEL : (716) 693-8813 TEL : (44) 120-657-9491

NUMBER

WS3T-8-2P-E3(6)

REV.

DATE: 01 / 09 / 01 BY: J.R.