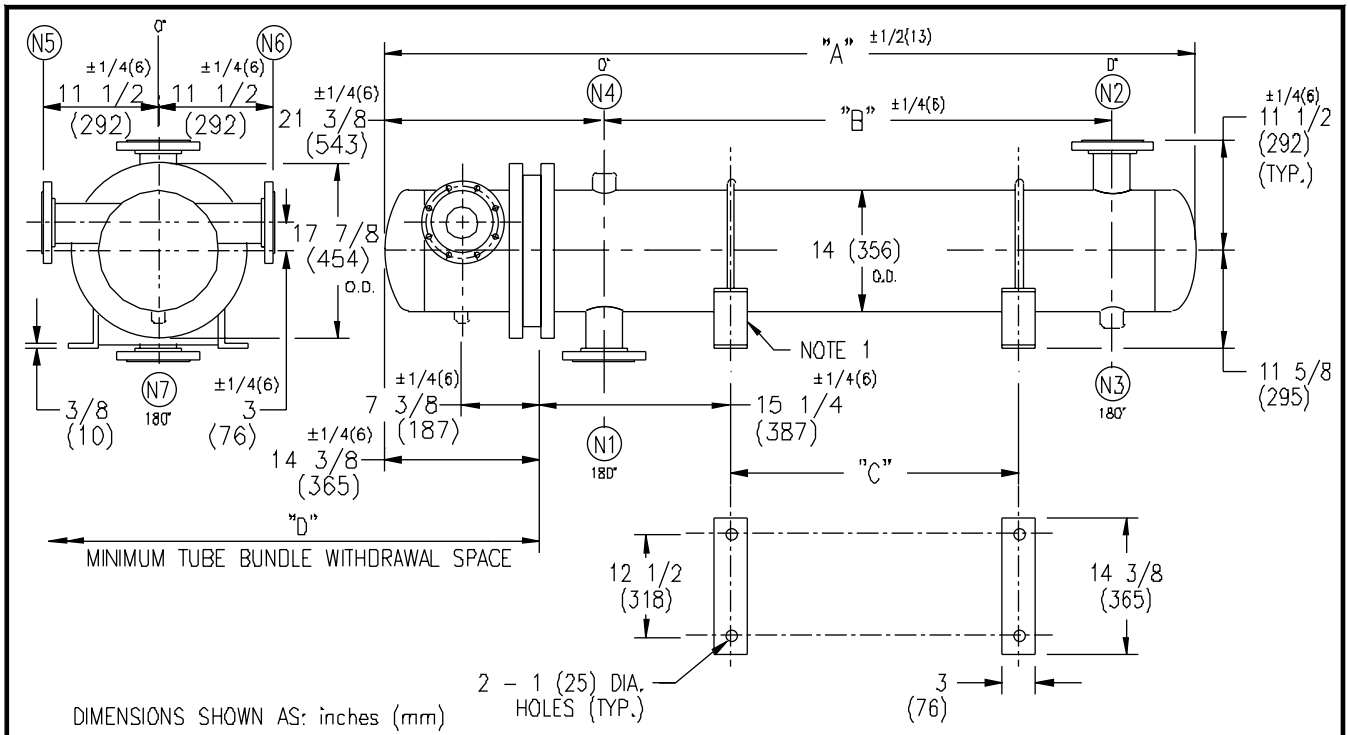


ARMSTRONG®



DIMENSIONS SHOWN AS: inches (mm)

EXCHANGER SIZE *—BAFFLE SPACING	DIMENSIONS											
	A		B		C		D		N1		N2	
	inches	mm	inches	mm	inches	mm	inches	mm	inches	mm	inches	mm
W-143-4*-4	52 3/8	1330	23	584	10	254	38	965	4	102	4	102
W-144-4*-4	64 3/8	1635	35	889	22	559	50	1270	4	102	4	102
W-145-4*-4	76 3/8	1940	47	1194	34	864	62	1575	4	102	4	102
W-146-4*-4	88 3/8	2245	59	1499	46	1168	74	1880	4	102	4	102
W-147-4*-4	100 3/8	2550	71	1803	58	1473	86	2184	4	102	4	102
W-148-4*-4	112 3/8	2854	83	2108	70	1778	98	2489	4	102	4	102
W-149-4*-4	124 3/8	3159	95	2413	82	2083	110	2794	4	102	4	102
W-1410-4*-4	136 3/8	3464	107	2718	94	2388	122	3099	4	102	4	102
W-1411-4*-4	148 3/8	3769	119	3023	106	2692	134	3404	4	102	4	102
W-1412-4*-4	160 3/8	4074	131	3327	118	2997	146	3708	4	102	4	102
W-1413-4*-4	172 3/8	4378	143	3632	130	3302	158	4013	4	102	4	102
W-1414-4*-4	184 3/8	4683	155	3937	142	3607	170	4318	4	102	4	102
W-1415-4*-4	196 3/8	4988	167	4242	154	3912	182	4623	4	102	4	102

NOZZLE SCHEDULE

SERVICE	MARK	SHELL SIDE	MARK	TUBE SIDE
INLET	(N1)	AS PER TABLE	(N5)	4 (102) FLG
OUTLET	(N2)	AS PER TABLE	(N6)	4 (102) FLG
DRAIN	(N3)	1/2 (13) NPT	(N7)	1/2 (13) NPT
VENT	(N4)	3/4 (19) NPT		

- NOTES: 1. SUPPORTS SUPPLIED ONLY IF SPECIFIED ON ORDER.
 2. NOZZLE SIZES SHOWN ARE RECOMMENDED FOR MAX. EXCHANGER LIFE, NO EXTERNAL FORCES APPLY.
 3. FABRICATED TO ASME CODE SECTION VIII DIVISION 1 AND LATEST ADDENDA.
 4. DRAWING IS NOT TO SCALE.
 5. ALL DIM'S ±1/8 (3) UNLESS OTHERWISE SHOWN.

DESIGN CONDITIONS

	SHELL		TUBES	
DESIGN PRESSURE	150 PSIG	1034 KPa	150 PSIG	1034 KPa
DESIGN TEMPERATURE	375 °F	191 °C	375 °F	191 °C
MIN. DESIGN METAL TEMP.	40 °F	4.4 °C	40 °F	4.4 °C
HYDRO. TEST PRESSURE	225 PSIG	1551 KPa	225 PSIG	1551 KPa
CONTENTS	WATER		WATER	

CUSTOMER:

LOCATION:

ENGINEER:

ORDER No.:

PROJECT/JOB:

LOCATION:

TAG:

(QUOTE #)

TITLE	G.A. 150 LB. W SERIES HEAT EXCHANGERS	A R M S T R O N G				NUMBER	W-14-4P-4(4)	REV. A
DATE:	12 / 01 / 94	BY: D.C.R.	TORONTO - CANADA	MONTREAL - CANADA	BUFFALO - N. Y.	COLCHESTER - U.K.	ECO #9172	APRIL 16/03
			TEL: (416) 765-2291	TEL: (514) 421-2424	TEL: (716) 693-8813	TEL: (44) 120-657-9491		J.R.