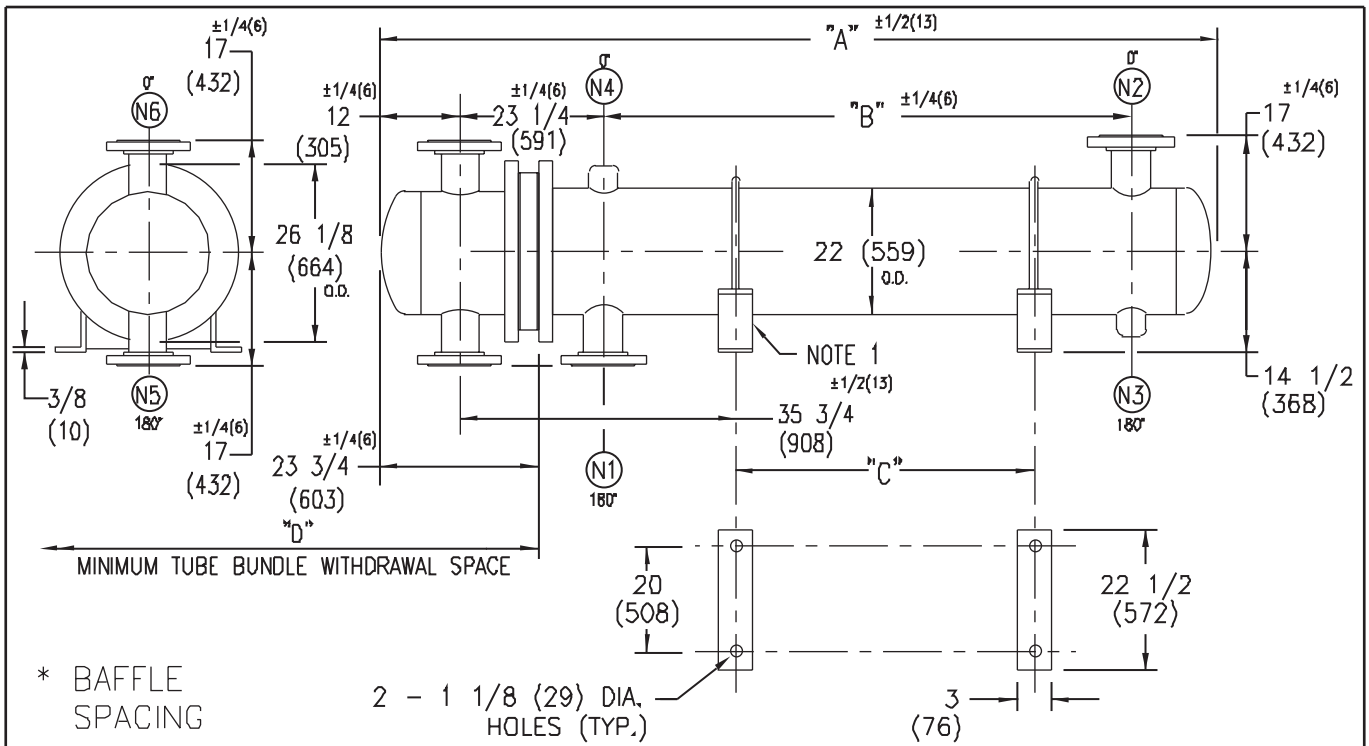


# ARMSTRONG®



EXCHANGER SIZE * -BAFFLE SPACING	DIMENSIONS											
	A		B		C		D		(N1)		(N2)	
	inches	mm	inches	mm	inches	mm	inches	mm	inches	mm	inches	mm
W-224-2*-4	73 3/4	1873	25 1/2	648	5 1/4	133	52	1321	12	305	12	305
W-225-2*-4	85 3/4	2178	37 1/2	953	17 1/4	438	64	1626	12	305	12	305
W-226-2*-4	97 3/4	2483	49 1/2	1258	29 1/4	743	76	1931	12	305	12	305
W-227-2*-4	109 3/4	2787	61 1/2	1562	41 1/4	1047	88	2235	12	305	12	305
W-228-2*-4	121 3/4	3092	73 1/2	1867	53 1/4	1352	100	2540	12	305	12	305
W-229-2*-4	133 3/4	3397	85 1/2	2172	65 1/4	1657	112	2845	12	305	12	305
W-2210-2*-4	145 3/4	3702	97 1/2	2477	77 1/4	1962	124	3150	12	305	12	305
W-2211-2*-4	157 3/4	4007	109 1/2	2782	89 1/4	2267	136	3455	12	305	12	305
W-2212-2*-4	169 3/4	4311	121 1/2	3086	101 1/4	2571	148	3759	12	305	12	305
W-2213-2*-4	181 3/4	4616	133 1/2	3391	113 1/4	2876	160	4064	12	305	12	305
W-2214-2*-4	193 3/4	4921	145 1/2	3696	125 1/4	3181	172	4369	12	305	12	305
W-2215-2*-4	205 3/4	5226	157 1/2	4001	137 1/4	3486	184	4674	12	305	12	305

NOZZLE SCHEDULE				
SERVICE	MARK	SHELL SIDE	MARK	TUBE SIDE
INLET	(N1)	AS PER TABLE ANSI (RF) FLG	(N5)	10 (254) ANSI (RF) FLG
OUTLET	(N2)	AS PER TABLE ANSI (RF) FLG	(N6)	10 (254) ANSI (RF) FLG
DRAIN	(N3)	3/4 (19) NPT		
VENT	(N4)	3/4 (19) NPT		

NOTES: 1. SUPPORTS SUPPLIED ONLY IF SPECIFIED ON ORDER.  
2. NOZZLE SIZES SHOWN ARE RECOMMENDED FOR MAX. EXCHANGER LIFE, NO EXTERNAL FORCES APPLY.  
3. FABRICATED TO ASME CODE SECTION VIII DIVISION 1 AND LATEST ADDENDA.  
4. DRAWING IS NOT TO SCALE.  
5. ALL DIMN'S ±1/8 (3) UNLESS OTHERWISE SHOWN.

DESIGN CONDITIONS		
	SHELL	TUBES
DESIGN PRESSURE	150 PSIG (1034 kpa)	150 PSIG (1034 kpa)
DESIGN TEMPERATURE	375 °F (191 °C)	375 °F (191 °C)
MIN. DESIGN METAL TEMP.	40 °F (4.4°C)	40 °F (4.4°C)
HYDRO. TEST PRESSURE	225 PSIG (1551 kpa)	225 PSIG (1551 kpa)
CONTENTS	WATER	WATER

CUSTOMER:  
LOCATION:  
  
ORDER No.:  
PROJECT/JOB:  
LOCATION:  
  
TAG: (QUOTE # )

TITLE 150 LB. W SERIES HEAT EXCHANGERS	<b>A R M S T R O N G</b>				NUMBER	REV. A
DATE :-SEP./15/99 BY :- AP/AG	TORONTO - CANADA	MONTREAL - CANADA	BUFFALO - N. Y.	COLCHESTER - U.K.	W-22-2P-4	ECD #9153
	TEL: (416) 755-2291	TEL: (514) 421-2424	TEL: (716) 693-8813	TEL: (44) 120-657-9491		JAN.7/03 J.R.