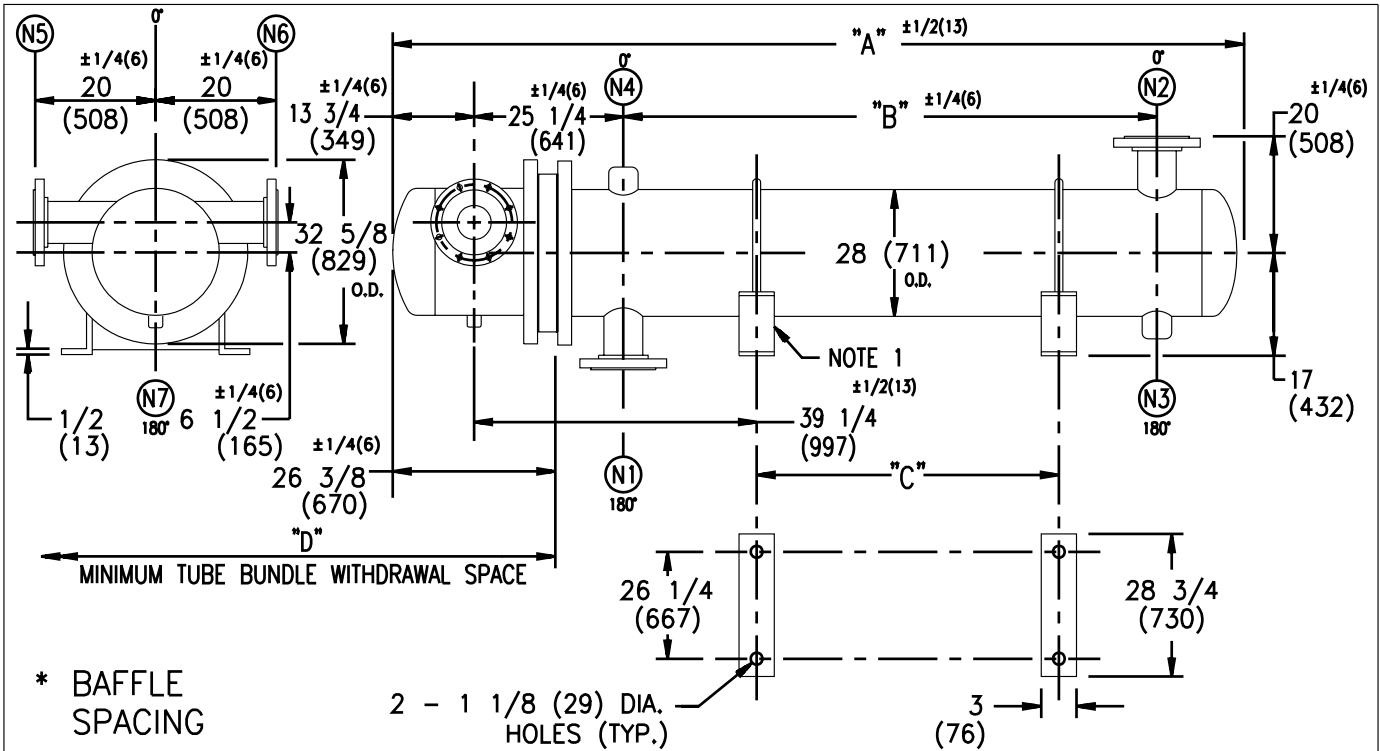


ARMSTRONG®



EXCHANGER SIZE *-BAFFLE SPACING	DIMENSIONS											
	A		B		C		D		N1		N2	
	inches	mm	inches	mm	inches	mm	inches	mm	inches	mm	inches	mm
W-284-4*-4	79 1/2	2019	25	635	3	76	55	1397	14	356	14	356
W-285-4*-4	91 1/2	2324	37	940	15	381	67	1702	14	356	14	356
W-286-4*-4	103 1/2	2629	49	1245	27	686	79	2007	14	356	14	356
W-287-4*-4	115 1/2	2934	61	1549	39	991	91	2311	14	356	14	356
W-288-4*-4	127 1/2	3239	73	1854	51	1295	103	2616	14	356	14	356
W-289-4*-4	139 1/2	3543	85	2159	63	1600	115	2921	14	356	14	356
W-2810-4*-4	151 1/2	3848	97	2464	75	1905	127	3226	14	356	14	356
W-2811-4*-4	163 1/2	4153	109	2769	87	2210	139	3531	14	356	14	356
W-2812-4*-4	175 1/2	4458	121	3073	99	2515	151	3835	14	356	14	356
W-2813-4*-4	187 1/2	4763	133	3378	111	2819	163	4140	14	356	14	356
W-2814-4*-4	199 1/2	5067	145	3683	123	3124	175	4445	14	356	14	356
W-2815-4*-4	211 1/2	5372	157	3988	135	3429	187	4750	14	356	14	356

NOZZLE SCHEDULE				
SERVICE	MARK	SHELL SIDE	MARK	TUBE SIDE
INLET	N1	AS PER TABLE ANSI (RF) FLG	N5	10 (254) ANSI (RF) FLG
OUTLET	N2	AS PER TABLE ANSI (RF) FLG	N6	10 (254) ANSI (RF) FLG
DRAIN	N3	3/4 (19) NPT	N7	3/4 (19) NPT
VENT	N4	3/4 (19) NPT		

NOTES:

1. SUPPORTS SUPPLIED ONLY IF SPECIFIED ON ORDER.
2. NOZZLE SIZES SHOWN ARE RECOMMENDED FOR MAXIMUM EXCHANGER LIFE.
3. FABRICATED TO ASME CODE SECTION VIII DIVISION 1 AND LATEST ADDENDA.
4. DRAWING IS NOT TO SCALE.
5. ALL DIMN'S ±1/8 (3) UNLESS OTHERWISE SHOWN.

DESIGN CONDITIONS		
	SHELL	TUBES
DESIGN PRESSURE	150 PSIG (1034 kpo)	150 PSIG (1034 kpo)
DESIGN TEMPERATURE	375 °F (191 °C)	375 °F (191 °C)
MIN. DESIGN METAL TEMP.	40 °F (4.4°C)	40 °F (4.4°C)
HYDRO. TEST PRESSURE	225 PSIG (1551 kpo)	225 PSIG (1551 kpo)
CONTENTS	WATER	WATER

CUSTOMER:
LOCATION:

ORDER No.:
PROJECT/JOB:
LOCATION:

TAG: (QUOTE #)

TITLE 150 LB. W SERIES HEAT EXCHANGERS	A R M S T R O N G				NUMBER	REV.
DATE :-SEP./15/99 BY :- AP/AG	TORONTO - CANADA	MONTREAL - CANADA	BUFFALO - N. Y.	COLCHESTER - U.K.	W-28-4P-4	
	TEL : (416) 755-2291	TEL : (514) 421-2424	TEL: (716) 693-8813	TEL: (44) 120-657-9491		